

SAMPLE BALLOT  
SAMPLE BALLOT  
SAMPLE BALLOT  
SAMPLE BALLOT  
SAMPLE BALLOT  
SAMPLE BALLOT  
SAMPLE BALLOT  
SAMPLE BALLOT  
SAMPLE BALLOT  
SAMPLE BALLOT  
SAMPLE BALLOT  
SAMPLE BALLOT

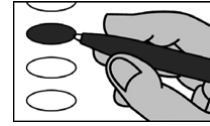
Sample Ballot  
Guilford County, North Carolina  
November 5, 2024

**B0054**



**BALLOT MARKING INSTRUCTIONS**

- A. With the marking device provided or a black ball point pen, completely fill in the oval to the left of each candidate or selection of your choice as shown.
- B. Where authorized, you may write in a candidate by filling in the oval and writing the name on the Write-in line.
- C. If you tear, deface or wrongly mark this ballot, return it to request a replacement.



PARTISAN ELECTIONS		NC Lieutenant Governor (You may vote for ONE)	NC Superintendent of Public Instruction (You may vote for ONE)
President and Vice President of the United States (You may vote for ONE)		<input type="radio"/> Rachel Hunt <i>Democratic Party</i> <input type="radio"/> Wayne Jones <i>Constitution Party</i> <input type="radio"/> Hal Weatherman <i>Republican Party</i> <input type="radio"/> Shannon W. Bray <i>Libertarian Party</i>	<input type="radio"/> Maurice (Mo) Green <i>Democratic Party</i> <input type="radio"/> Michele Morrow <i>Republican Party</i>
<input type="radio"/> Kamala D. Harris Tim Walz <i>Democratic Party</i> <input type="radio"/> Chase Oliver Mike ter Maat <i>Libertarian Party</i> <input type="radio"/> Jill Stein Rudolph Ware <i>Green Party</i> <input type="radio"/> Randall Terry Stephen E. Broden <i>Constitution Party</i> <input type="radio"/> Donald J. Trump JD Vance <i>Republican Party</i> <input type="radio"/> Cornel West Melina Abdullah <i>Justice for All Party</i> <input type="radio"/> _____ Write-in	<b>NC Attorney General</b> (You may vote for ONE) <input type="radio"/> Jeff Jackson <i>Democratic Party</i> <input type="radio"/> Dan Bishop <i>Republican Party</i>	NC Treasurer (You may vote for ONE)	
US House of Representatives District 5 (You may vote for ONE)		<input type="radio"/> Bob Drach <i>Libertarian Party</i> <input type="radio"/> Jessica Holmes <i>Democratic Party</i> <input type="radio"/> Dave Boliek <i>Republican Party</i>	<input type="radio"/> Wesley Harris <i>Democratic Party</i> <input type="radio"/> Brad Briner <i>Republican Party</i>
<input type="radio"/> Virginia Foxx <i>Republican Party</i> <input type="radio"/> Chuck Hubbard <i>Democratic Party</i>	<b>NC Auditor</b> (You may vote for ONE) <input type="radio"/> Sean Haugh <i>Libertarian Party</i> <input type="radio"/> Sarah Taber <i>Democratic Party</i> <input type="radio"/> Steve Troxler <i>Republican Party</i>	NC Supreme Court Associate Justice Seat 6 (You may vote for ONE)	
NC Governor (You may vote for ONE)		<b>NC Commissioner of Agriculture</b> (You may vote for ONE)	<input type="radio"/> Jefferson G. Griffin <i>Republican Party</i> <input type="radio"/> Allison Riggs <i>Democratic Party</i>
<input type="radio"/> Mark Robinson <i>Republican Party</i> <input type="radio"/> Mike Ross <i>Libertarian Party</i> <input type="radio"/> Vinny Smith <i>Constitution Party</i> <input type="radio"/> Josh Stein <i>Democratic Party</i> <input type="radio"/> Wayne Turner <i>Green Party</i>	<b>NC Commissioner of Insurance</b> (You may vote for ONE) <input type="radio"/> Natasha Marcus <i>Democratic Party</i> <input type="radio"/> Mike Causey <i>Republican Party</i>	NC Court of Appeals Judge Seat 12 (You may vote for ONE)	
NC Commissioner of Labor (You may vote for ONE)		<input type="radio"/> Luke Farley <i>Republican Party</i> <input type="radio"/> Braxton Winston II <i>Democratic Party</i>	<input type="radio"/> Tom Murry <i>Republican Party</i> <input type="radio"/> Carolyn Jennings Thompson <i>Democratic Party</i>
NC Secretary of State (You may vote for ONE)		<b>NC Commissioner of Insurance</b> (You may vote for ONE)	<b>NC Court of Appeals Judge Seat 14</b> (You may vote for ONE)
<input type="radio"/> Elaine Marshall <i>Democratic Party</i> <input type="radio"/> Chad Brown <i>Republican Party</i>	<input type="radio"/> Chris Freeman <i>Republican Party</i> <input type="radio"/> Martin E. Moore <i>Democratic Party</i>	NC Court of Appeals Judge Seat 15 (You may vote for ONE)	
NC State Senate District 26 (You may vote for ONE)		<input type="radio"/> Steve Luking <i>Democratic Party</i> <input type="radio"/> Alvin Robinson <i>Constitution Party</i> <input type="radio"/> Philip E. (Phil) Berger <i>Republican Party</i>	<b>NC Court of Appeals Judge Seat 15</b> (You may vote for ONE)
NC House of Representatives District 62 (You may vote for ONE)		<input type="radio"/> Marjorie Benbow <i>Democratic Party</i> <input type="radio"/> John M. Blust <i>Republican Party</i>	<b>NC State Senate District 26</b> (You may vote for ONE)
Continue voting next side →			

SAMPLE BALLOT  
SAMPLE BALLOT  
SAMPLE BALLOT  
SAMPLE BALLOT  
SAMPLE BALLOT  
SAMPLE BALLOT  
SAMPLE BALLOT  
SAMPLE BALLOT  
SAMPLE BALLOT  
SAMPLE BALLOT  
SAMPLE BALLOT  
SAMPLE BALLOT

